

SPECIFICATIONS

Model	LD-560
Method	HPLC (High Performance Liquid Chromatography)
Parameters	HbA1c, HbF, HbA1a, HbA1b, HbA0; HbA2 (optional)*
Test Speed	90 seconds per test
Wavelength	420nm
Sample Type	Whole Blood, Pre-diluted blood
Autoloader Capacity	20 tubes
Reagents Kit	Eluent A, Eluent B, Eluent C* Hemolysis, Chromatography Column
Precision	CV < 2%
Column Capacity	3000 tests
Report Range	3-18%
Working Condition	Temperature: 15-30 °C
	Humidity: 30-85%
Voltage	100-240VA
Frequency	50/60Hz
Dimensions	378mm×380mm×510mm

\* Due to continues upgradation features and color subject to change without prior notice.

Efficient HPLC System for  
HbA1c Testing

True HPLC System LD-560



HbA1c Testing



- Three testing modes: HbA1c, Variant\* & A2/F\*
  - 20 sample loading capacity, continuous loading
  - On screen reagents Inventory & Alarms
- Primary tube sampling with cap piercing facility
  - Inbuilt sample barcode reader with LIS connectivity

★ Coming Soon: Variant & A2/F

# LD-560

## HPLC System for HbA1c Testing

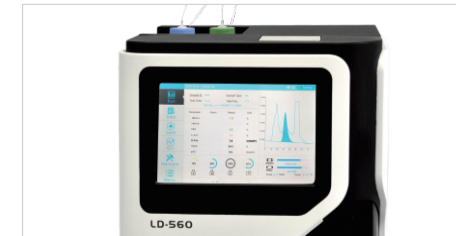
Proven golden standard method for HbA1c testing

Fast: 90 seconds per test

CV < 2%

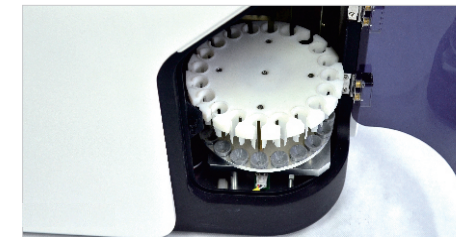
Large size touch screen for friendly interface

Most cost-effective



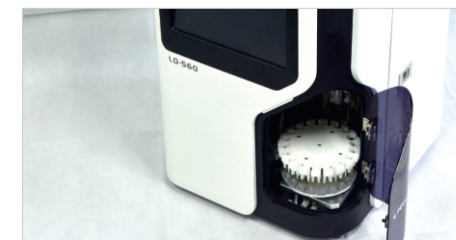
### HPLC

- The most recognized principle for HbA1c testing
- CV < 2%



### Full Automation

- Autoloader for 20 tubes
- Automatically recognizing sample type, and switching the testing mode
- Just one click to start testing



### Smart System

- Robust computing system
- Automatic scanning of barcode
- Automatic sample type recognition
- Reagents level alarm



### Quality & Performance

- IFCC and NGSP certification
- Control & Calibrators from the original manufacturer



### Convenient Operation

- Auto washing for self maintenance at startup
- 10" LCD touch screen to provide rich information
- Easy to change reagents

## FACTS ABOUT DIABETES



The number of patients with diabetes increased from 108 million in the year 1980 to 422 million in the year 2014. In 2014, 8.5% of adults (above age 18) globally has diabetes, and in 1980, this rate was 4.7%. The rate of diabetes is growing faster in the under-developed countries. Diabetes has become the major cause to blindness, kidney failure, heart attack, stroke, and lower limb amputation. In 2012, 1.5 million of cases of death had direct relation with diabetes; another 2.2 million of death was related with high level of blood sugar. Half of the death with high level of blood sugar happened before their age 70. According to WHO, diabetes would become the 7th cause of death by 2030. Glycated Hemoglobin (Hemoglobin A1c, or HbA1c as abbreviation) testing by High Performance Liquid Chromatography (HPLC) method is the golden standard for diabetes diagnosis, and treatment assessment. Every patient with diabetes is advised to have their HbA1c tested for 2-4 times annually. As the education to both the professionals and the patients goes on, the importance of HbA1c testing has been widely accepted and acknowledged.

LD560 V02.06		
2019-10-10	17:35	1-7
ID: 3094159260		
HbA1c:	33	mmol/mol
HbA1c:	5.2	%
HbF:	1.2	%
	Area	%
HbA1a	0.1	1.1
HbA1b	0.1	1.9
HbF	0.1	1.2
LAlc	0.1	1.1
SAlc	0.4	5.2
HbA0	6.9	89.4
Total Area	7.7	

